

# Choroby dýchacej sústavy

Nina Mizeráková, Emma Pásztorová

# Choroby dýchacej sústavy



## 1. Choroby dolných dýchacích ciest

- a. Ochorenia pohrudnice a popľúcnice
- b. Ochorenia priedušiek a priedušnice
- c. Pľúcne ochorenia

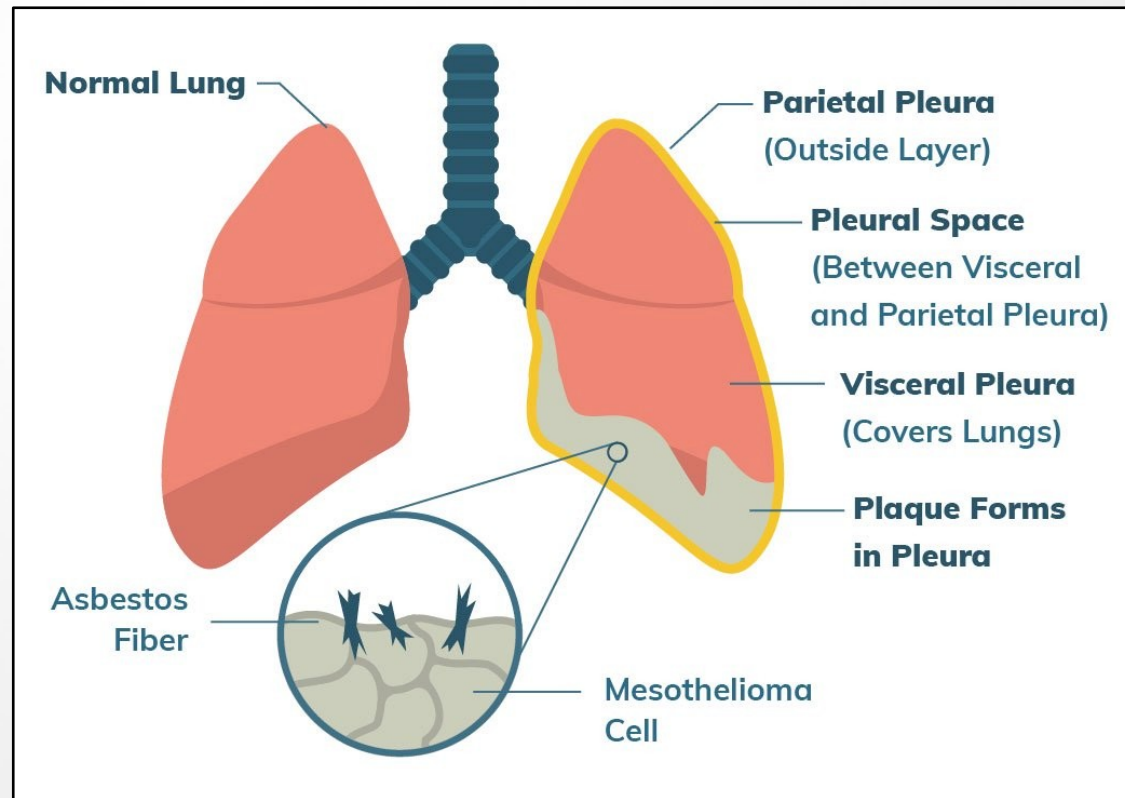
## 2. Choroby horných dýchacích ciest

- a. Ochorenia nosa a nosovej dutiny
- b. Choroby nosohltana
- c. Choroby hrtana
- d. Ochorenia prínosových dutín

# 1. Choroby dolných dýchacích ciest



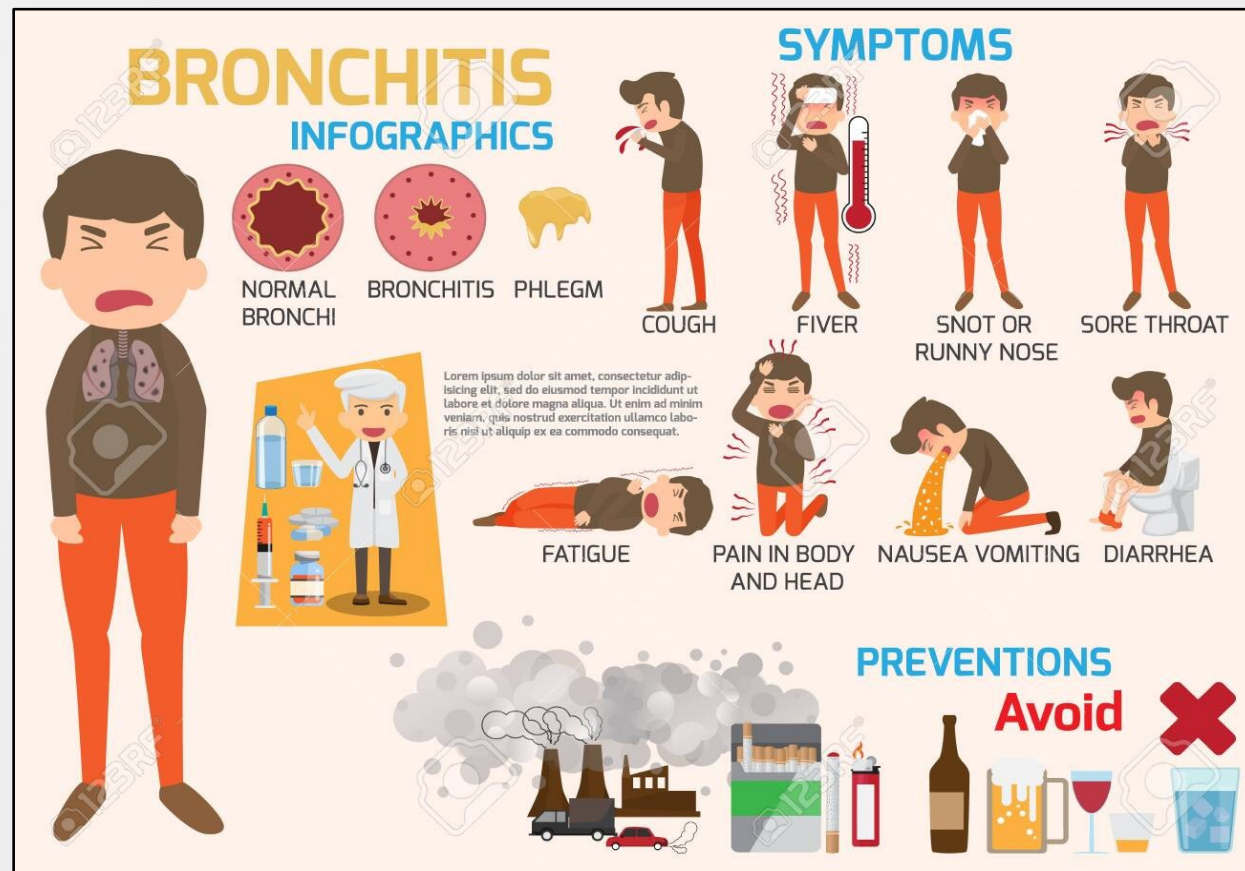
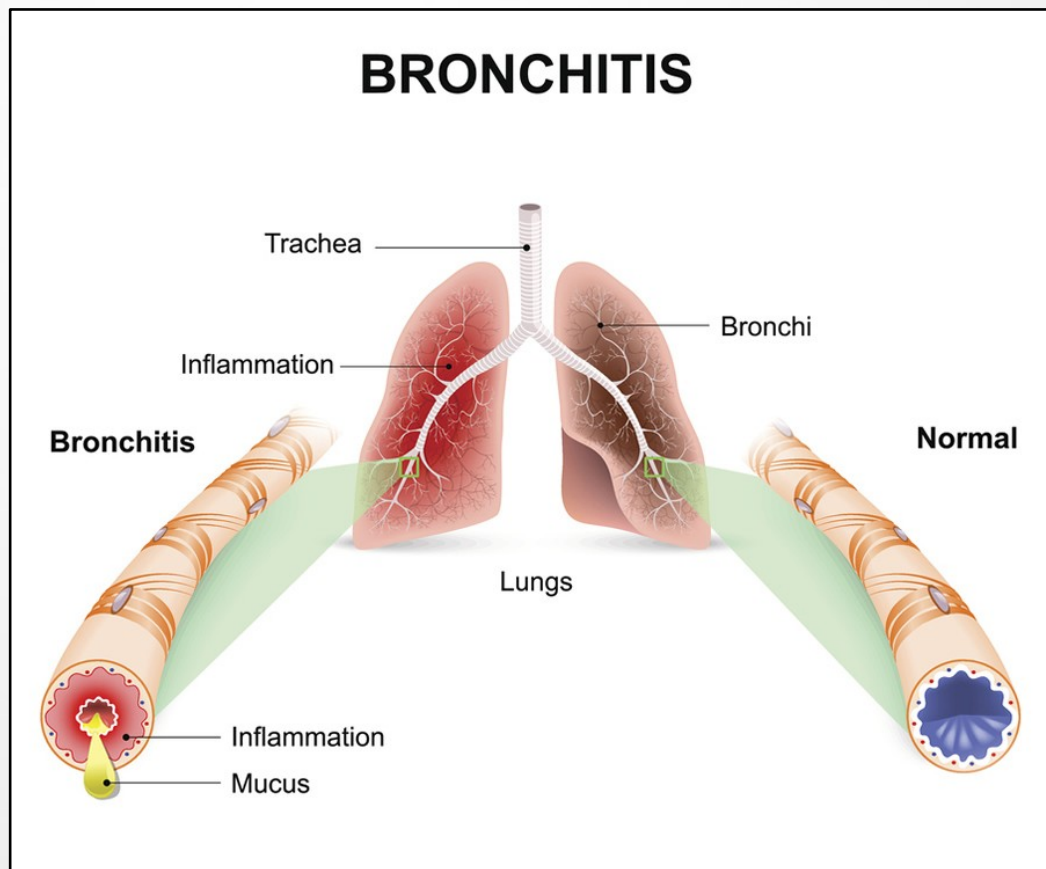
## a. Ochorenia pohrudnice a popľúcnice – mezotelióm



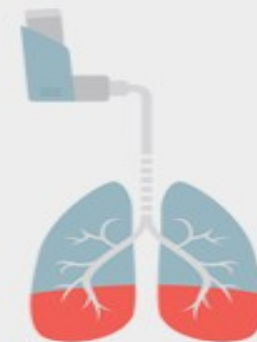
# 1. Choroby dolných dýchacích ciest



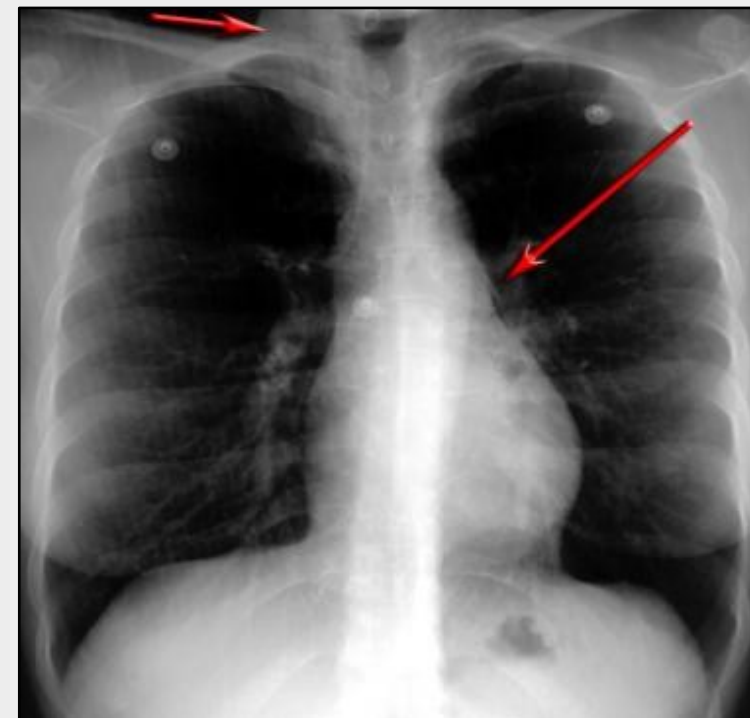
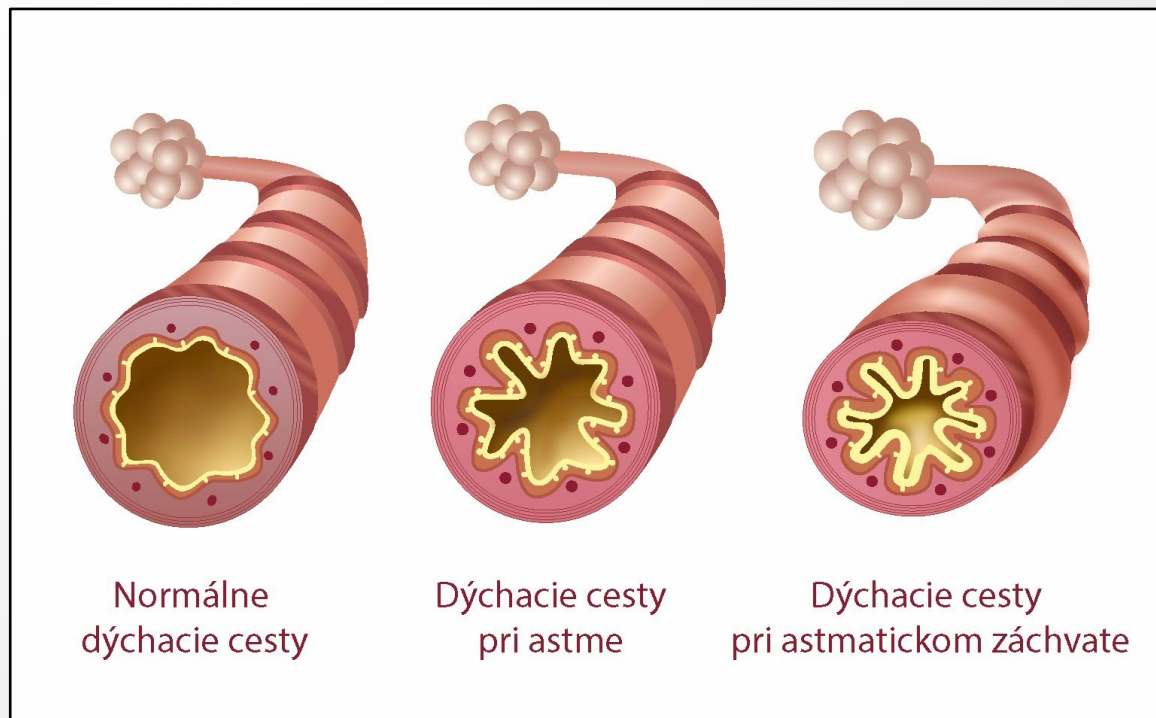
- b. Ochorenia priedušiek a priedušnice
- zápal priedušiek = bronchitída



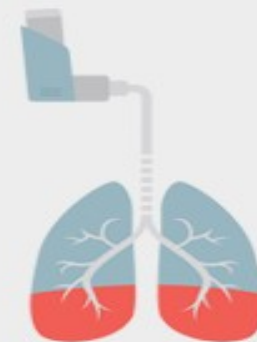
# 1. Choroby dolných dýchacích ciest



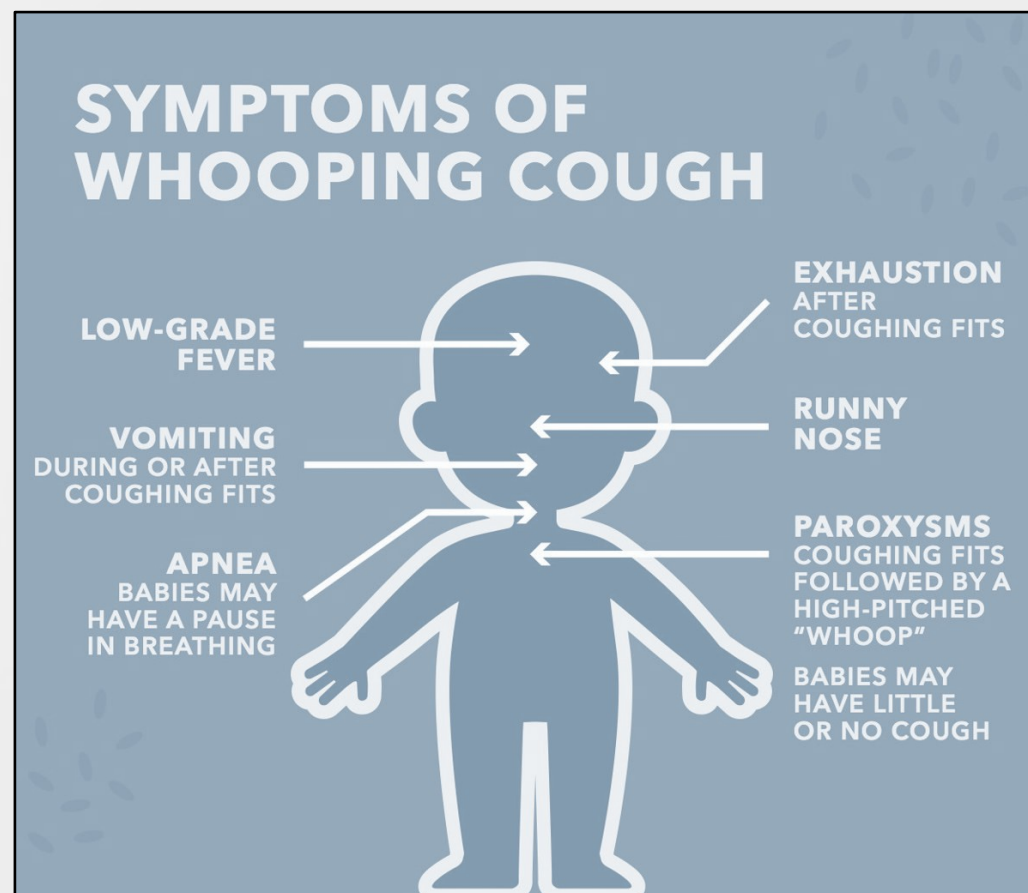
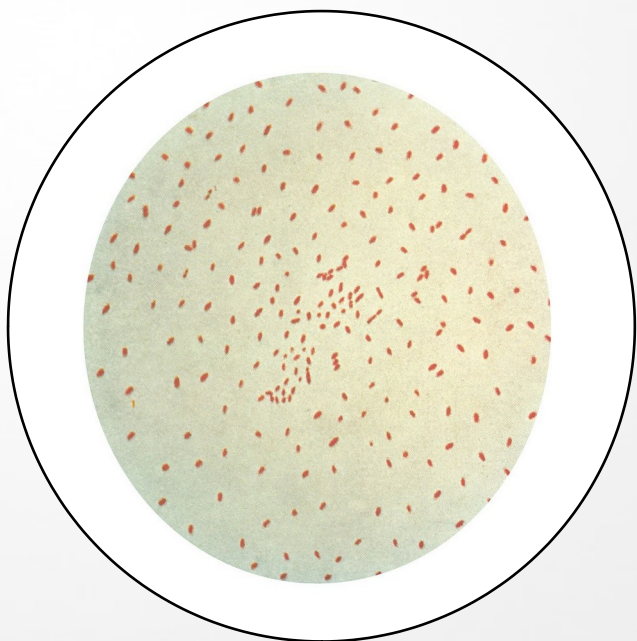
- b. Ochorenia priedušiek a priedušnice
  - priedušková astma = astma bronchiale



# 1. Choroby dolných dýchacích ciest



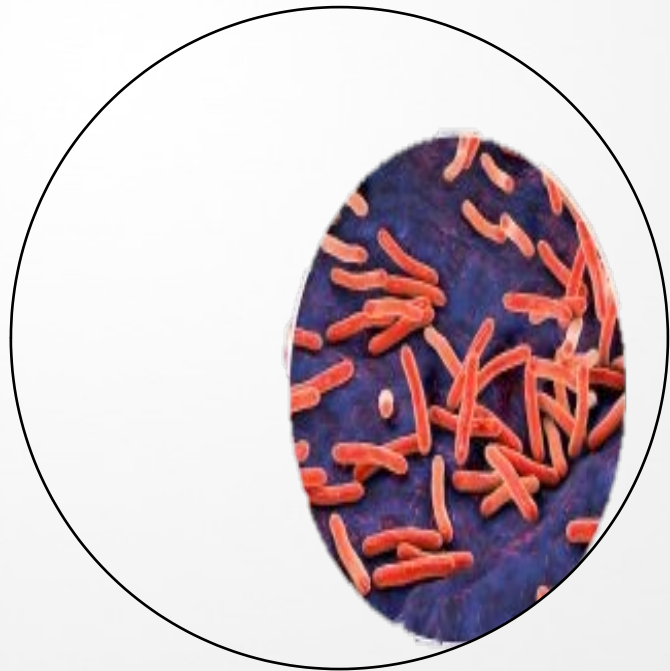
- b. Ochorenia priedušiek a priedušnice
- čierny kašeľ



# 1. Choroby dolných dýchacích ciest



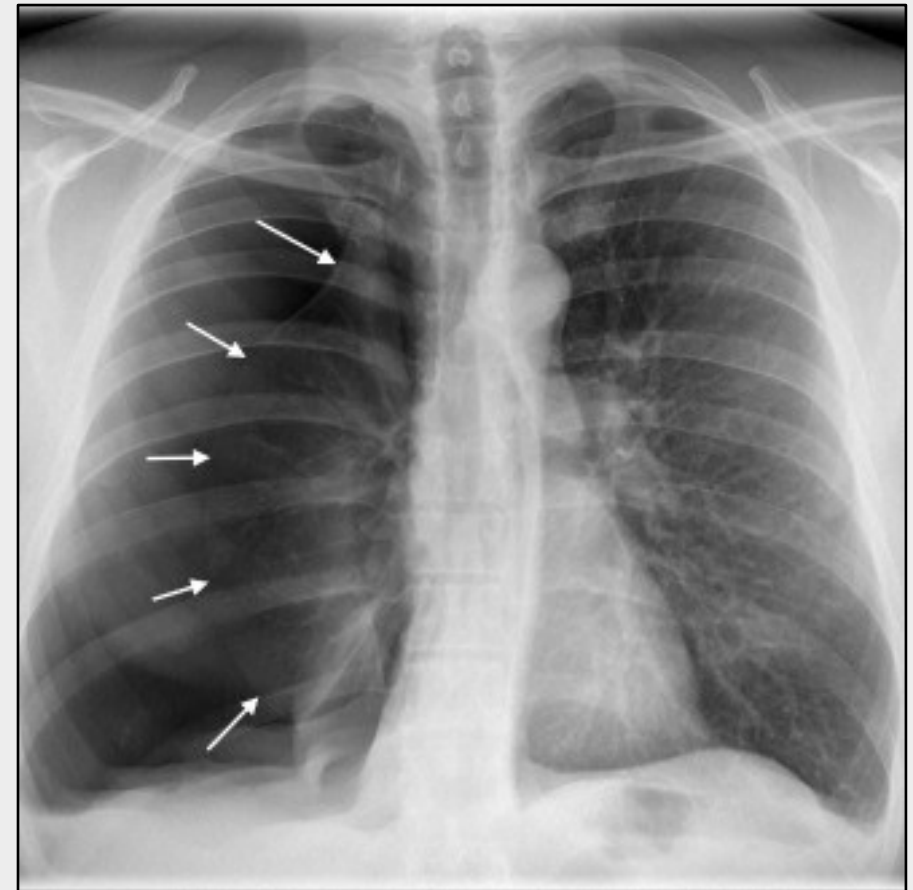
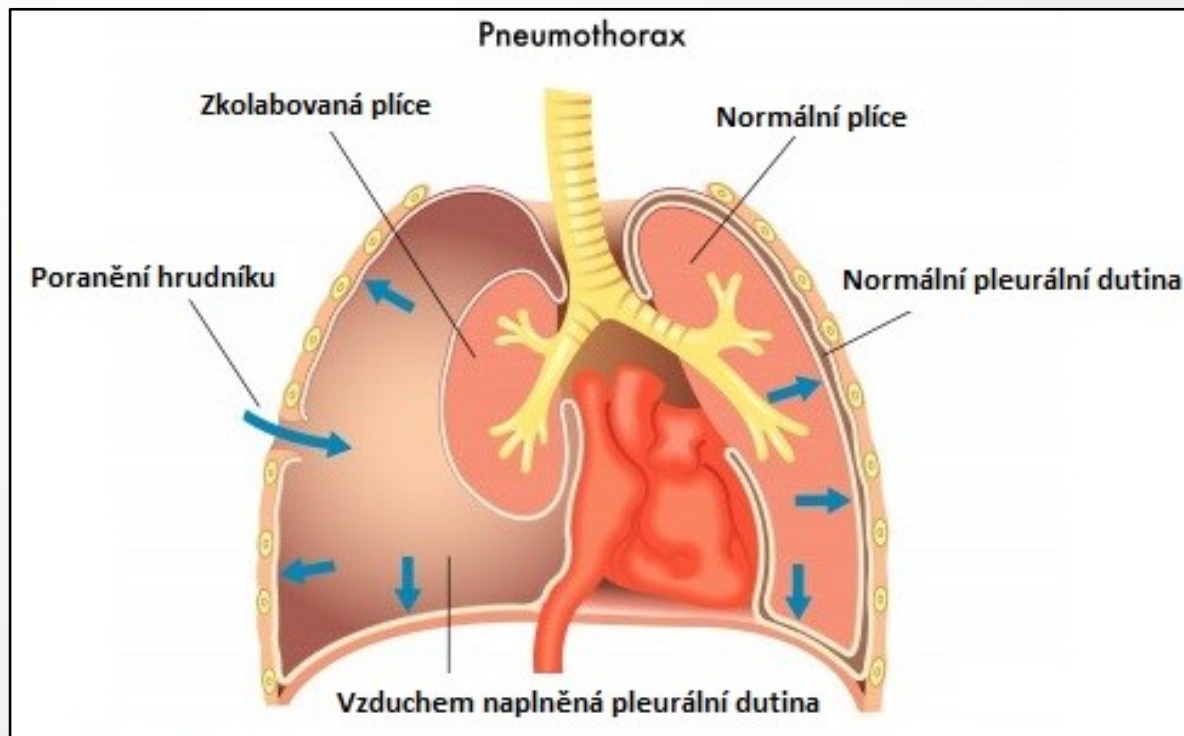
- c. Pľúcne ochorenia
- tuberkulóza



# 1. Choroby dolných dýchacích ciest



- c. Pľúcne ochorenia
- pneumotorax

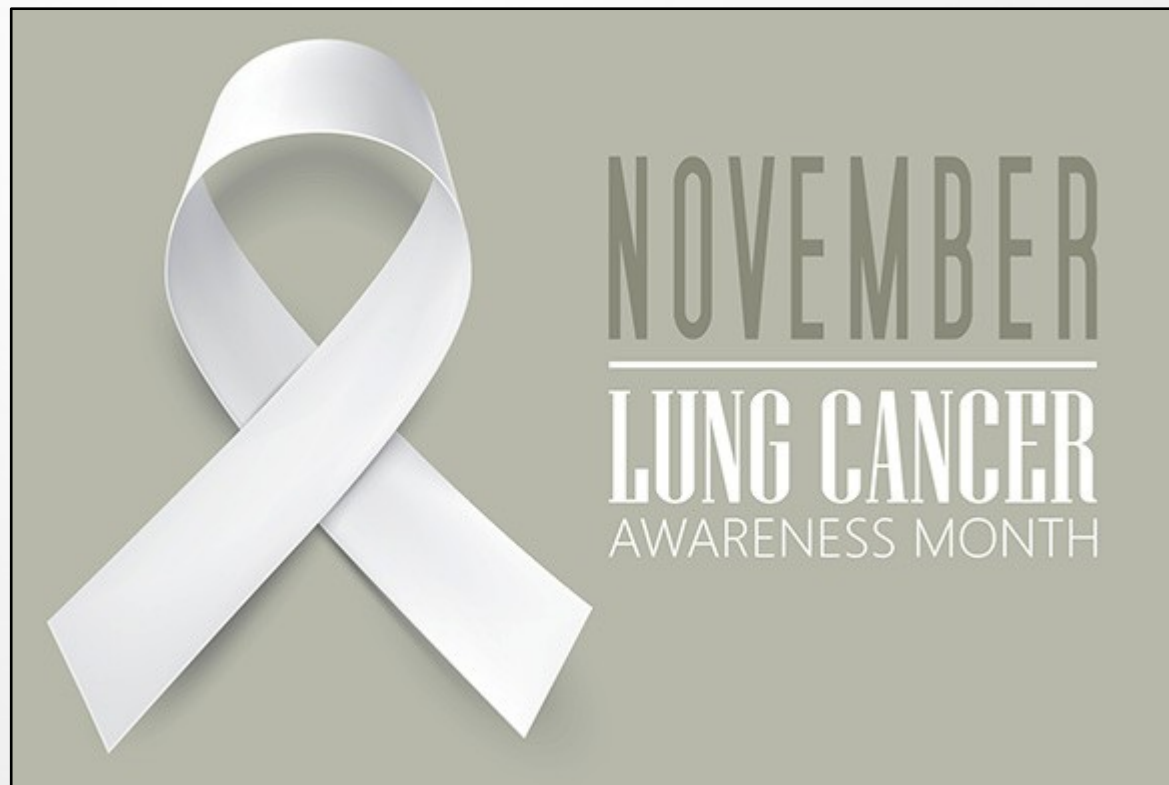




# 1. Choroby dolných dýchacích ciest



- c. Pľúcne ochorenia
- rakovina pľúc



## Lung Cancer

**Main Function**  
Process of Gas Exchange called Respiration

Trachea  
Bronchus  
Bronchi

Bronchiole and alveoli  
Capillary  
CO<sub>2</sub>  
CO<sub>2</sub>  
CO<sub>2</sub>  
Gas exchange within alveoli

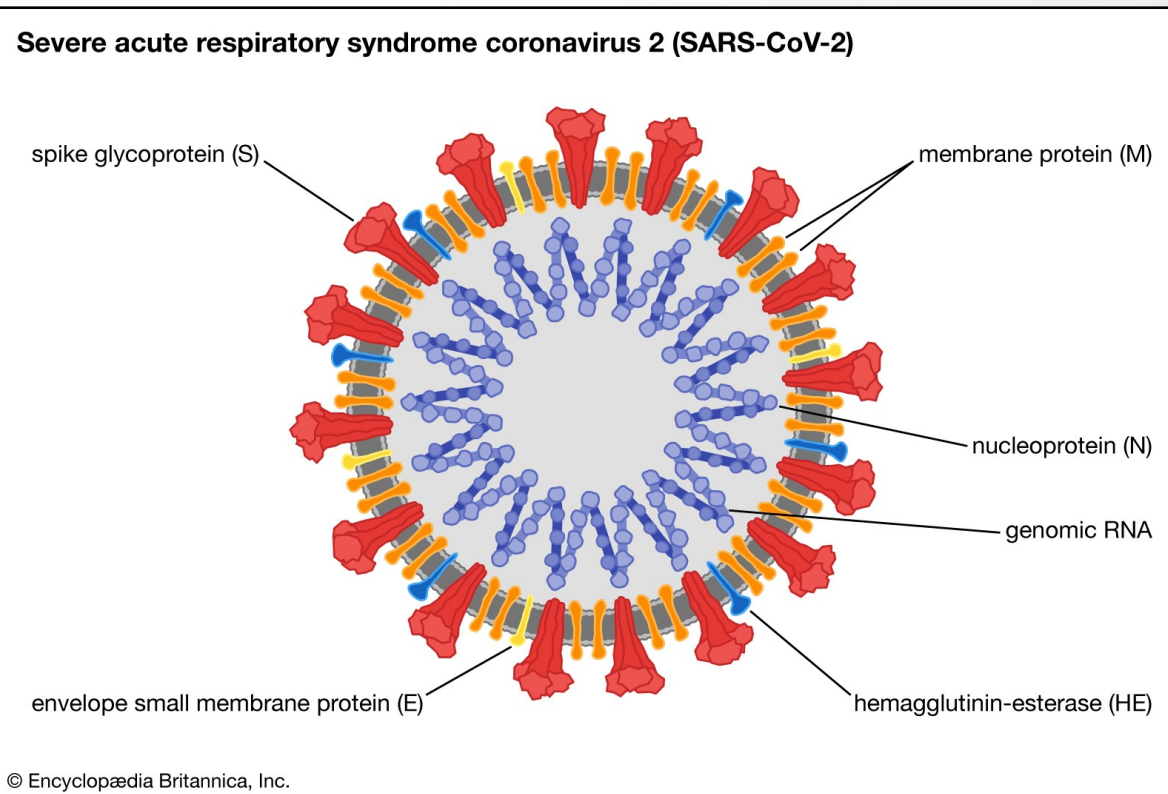
- Lung Cancer is the uncontrolled growth of malignant cells that originate in the lungs.
- Lung cancer may spread to lymph nodes or other organs in the body, such as the brain.

# 1. Choroby dolných dýchacích ciest



## c. Pľúcne ochorenia

### - SARS



**Coronavirus**

Middle East respiratory syndrome (MERS) and severe acute respiratory syndrome (SARS) are viral respiratory illnesses caused by a coronavirus.

**Common symptoms**

- Fever
- A dry cough develops after 2 to 7 days
- Mild breathing difficulties at the outset
- Gastrointestinal issues
- Diarrhea

**Severe symptoms**

- High fever (100.4°F or higher)
- Pneumonia
- Kidney failure

**Transmission**

Coughs or sneezes from

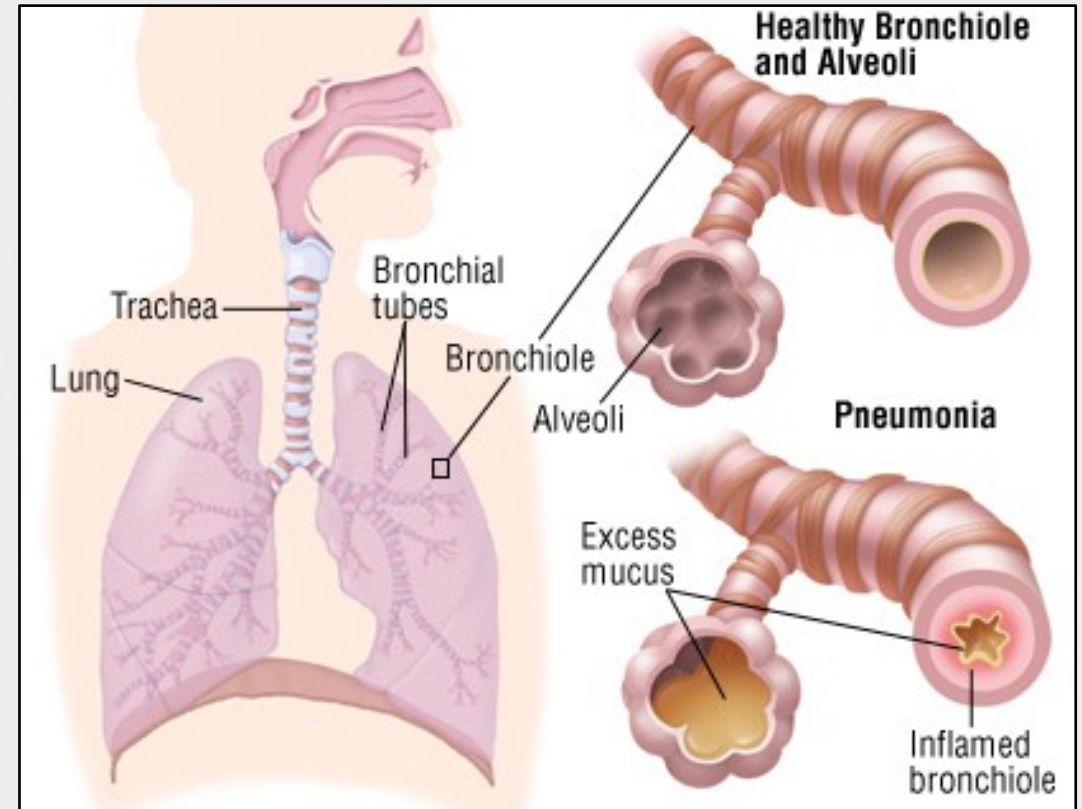
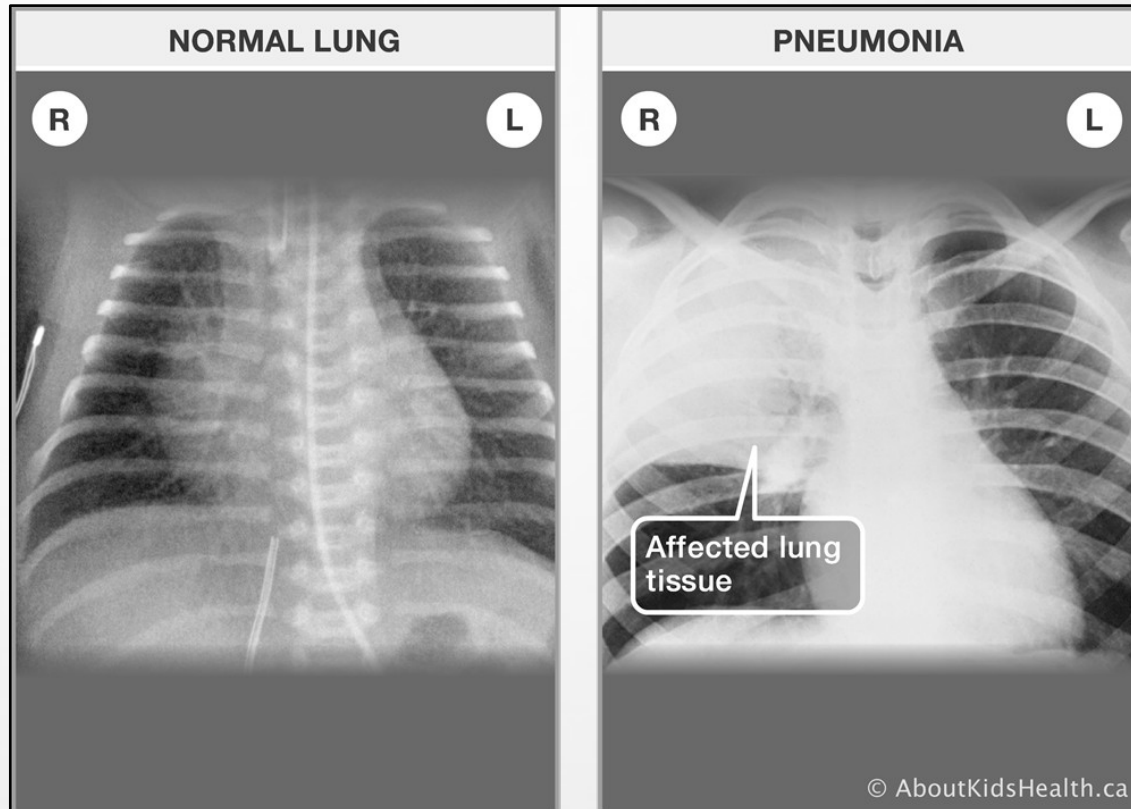
A grey silhouette of a human figure is shown with red dots indicating the locations of common symptoms: the head (fever), the chest (dry cough), the chest (breathing difficulties), the abdomen (gastrointestinal issues), and the lower abdomen (diarrhea).

# 1. Choroby dolných dýchacích ciest



## c. Pľúcne ochorenia

- zápal pľúc = pneumónia

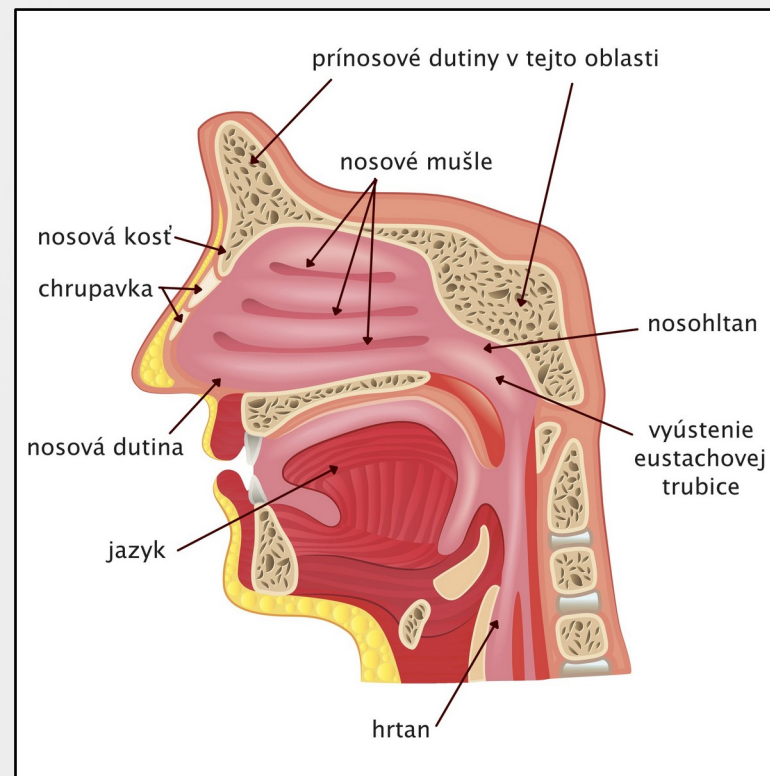


## 2. Choroby horných dýchacích ciest



### a. Ochorenia nosa a nosovej dutiny

- nosné polypy
- nádcha

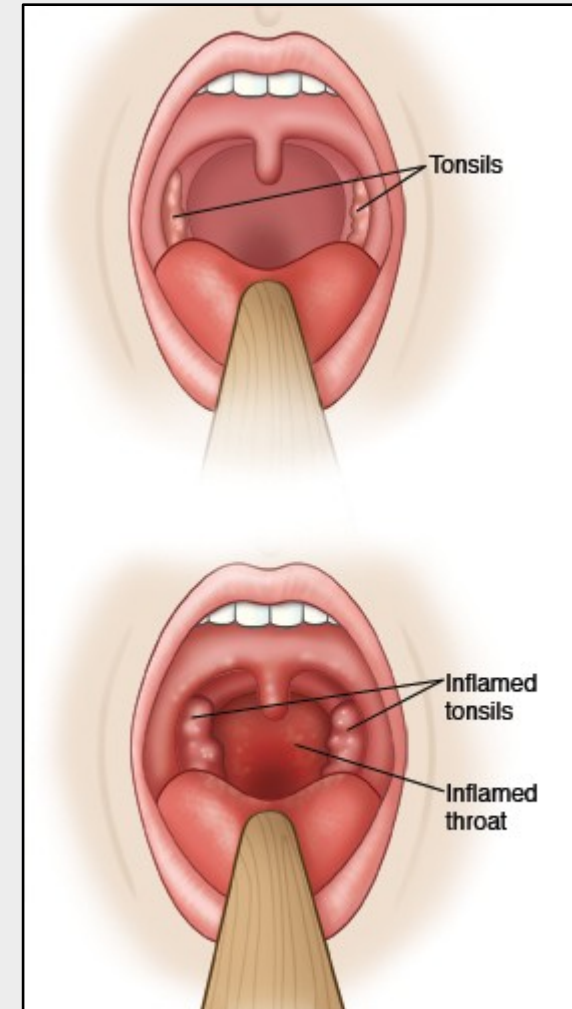
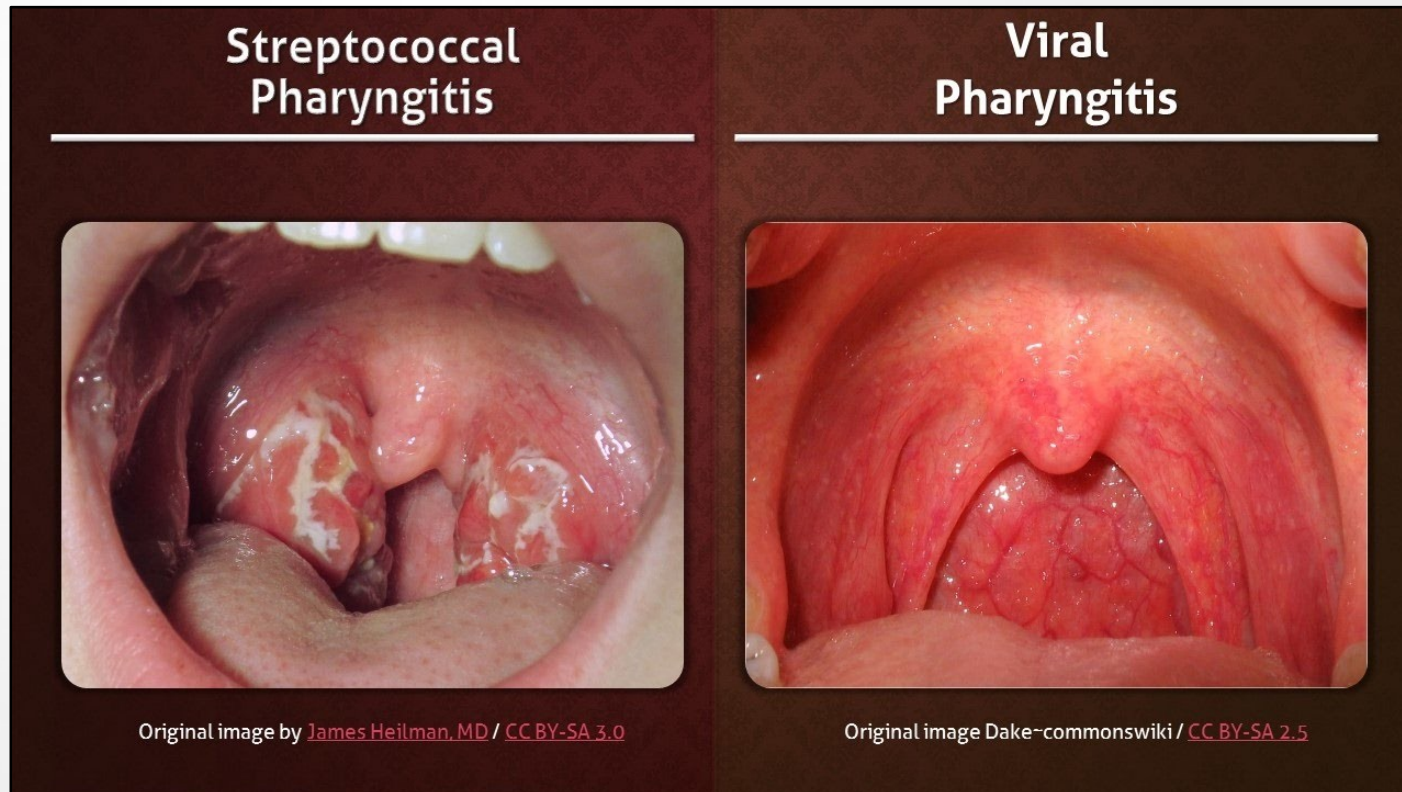


# 2. Choroby horných dýchacích ciest

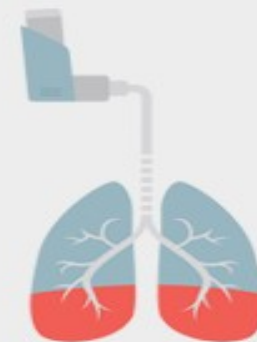


## b. Choroby nosohltanu

- zápal nosohltanu = faryngitída

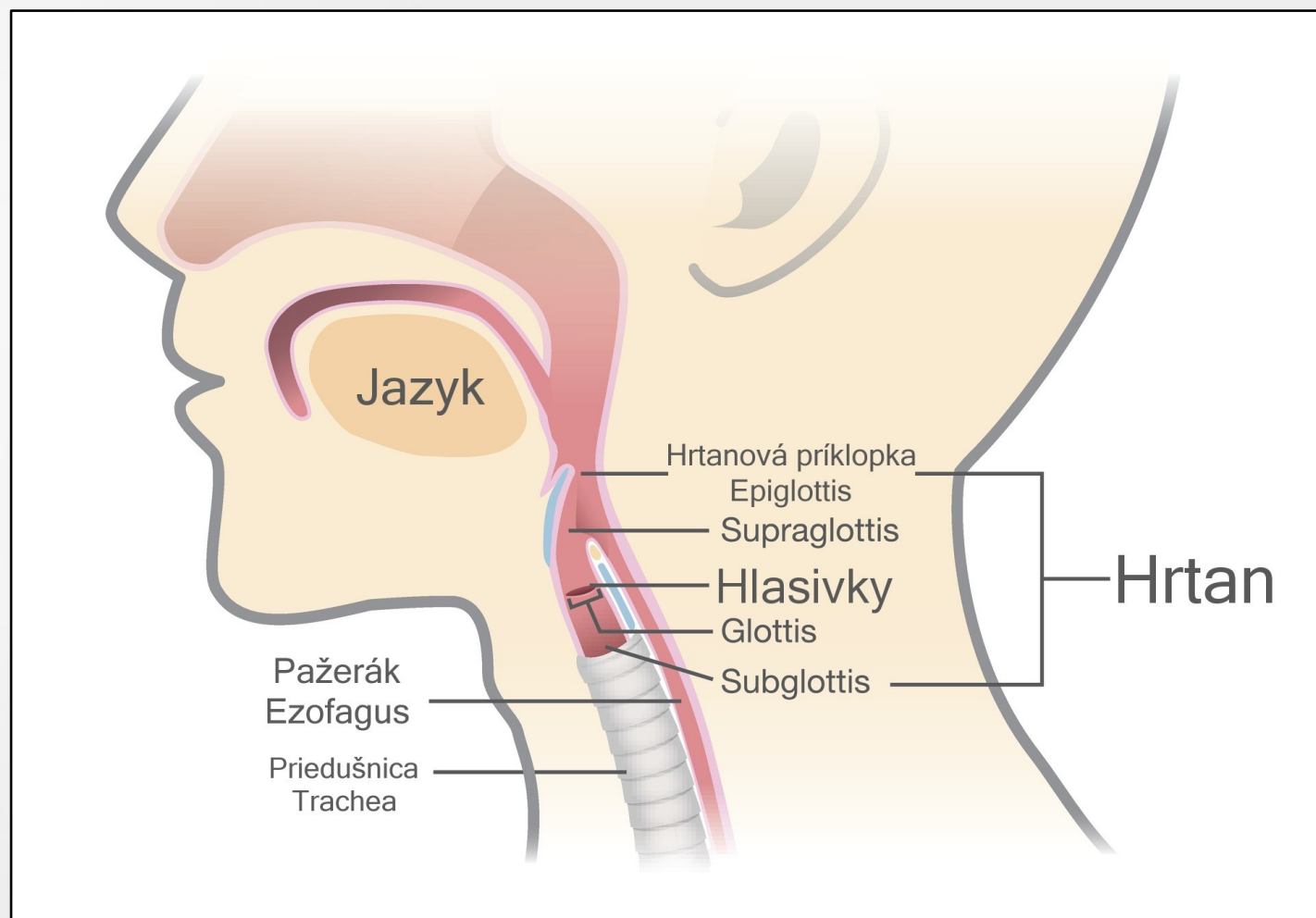
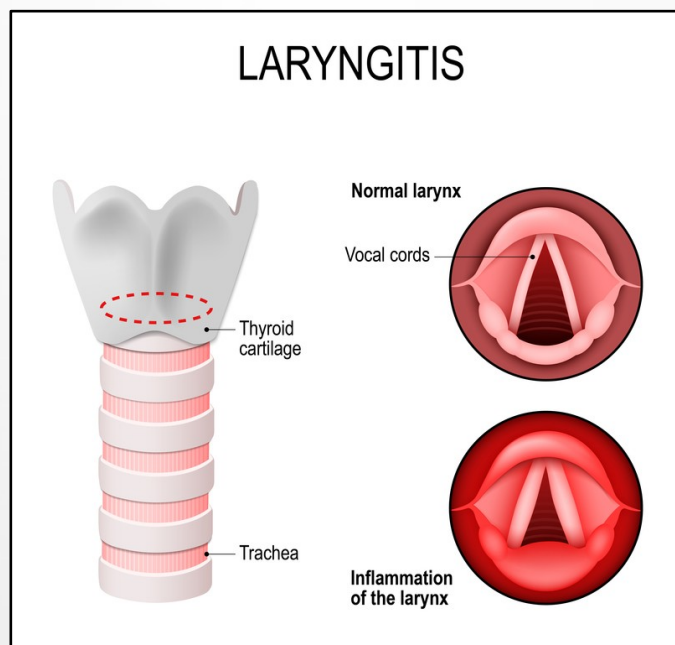


## 2. Choroby horných dýchacích ciest



### c. Choroby hrtana

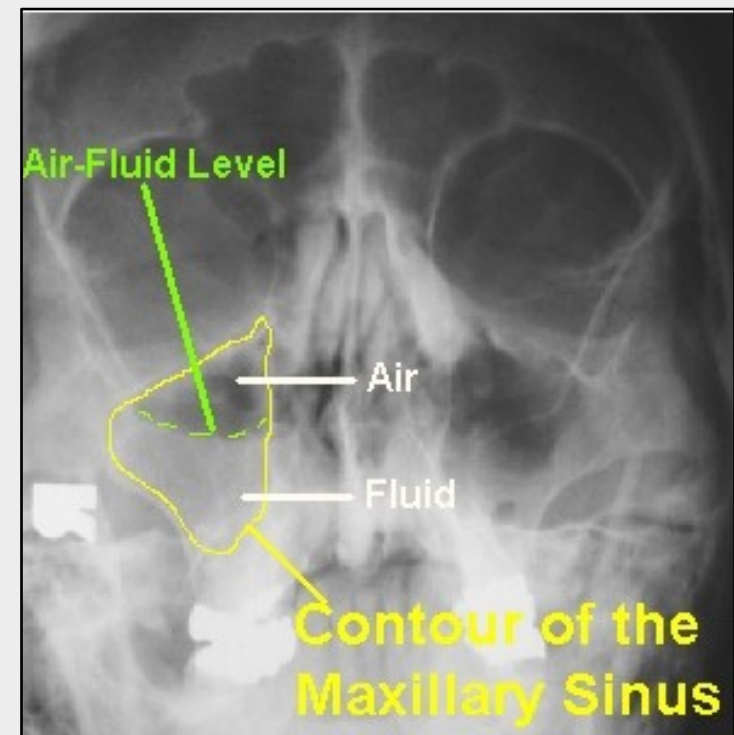
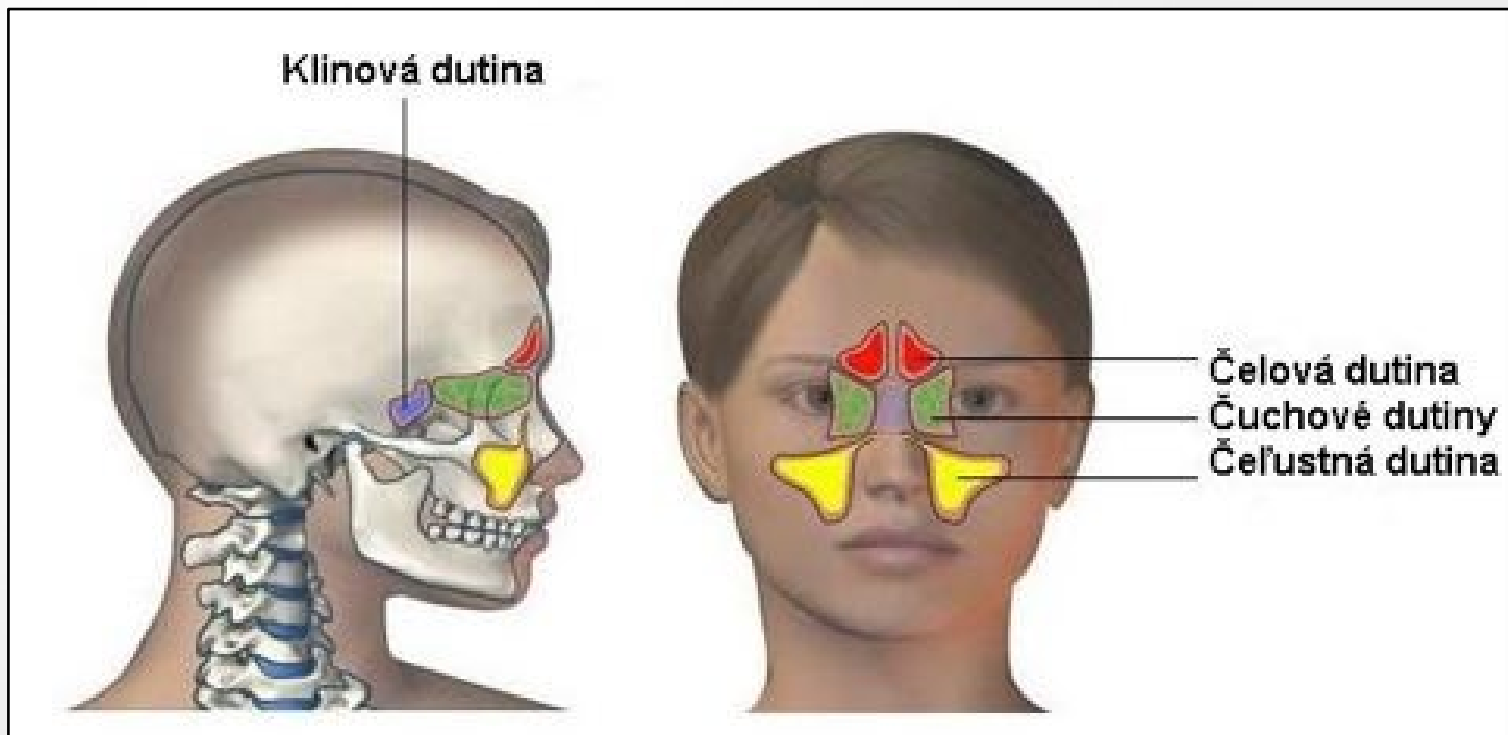
- laryngitída
- epiglotitída
- rakovina hrtana



## 2. Choroby horných dýchacích ciest



- d. Ochorenia prínosových dutín
- zápal dutín = sinusitída

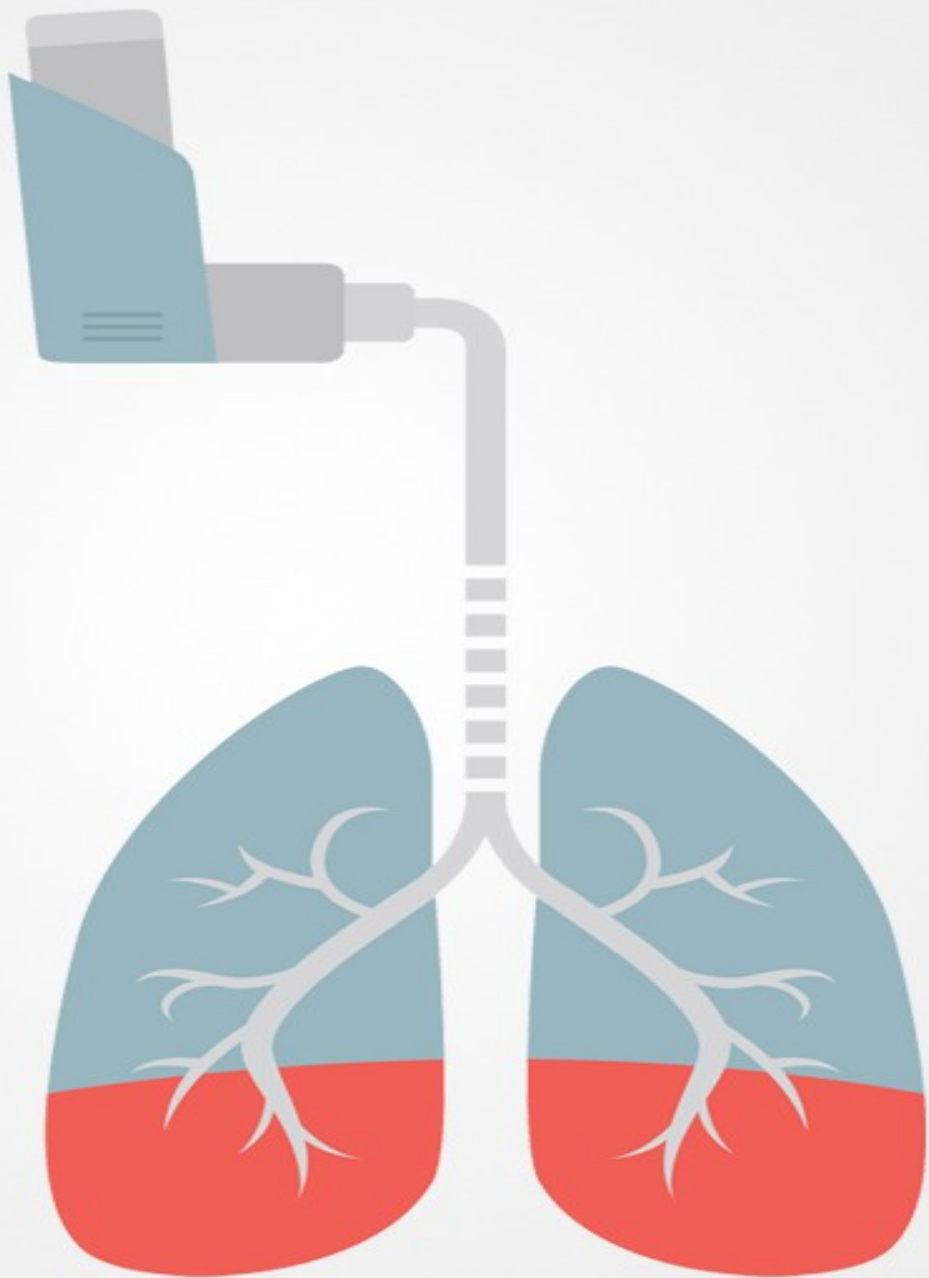


# Zdroje



- <https://www.liekysrozumom.sk/clanky/137/prehad-povinnych-odporu-canych-ockovani-u-deti>
- <http://www.ockovanieinfo.sk/sekcia-sk-51-ierny-kae-div-kae>
- <https://www.alphamedical.sk/casopis-invivo/bronchialna-astma>





*Ďakujeme  
za pozornosť!*