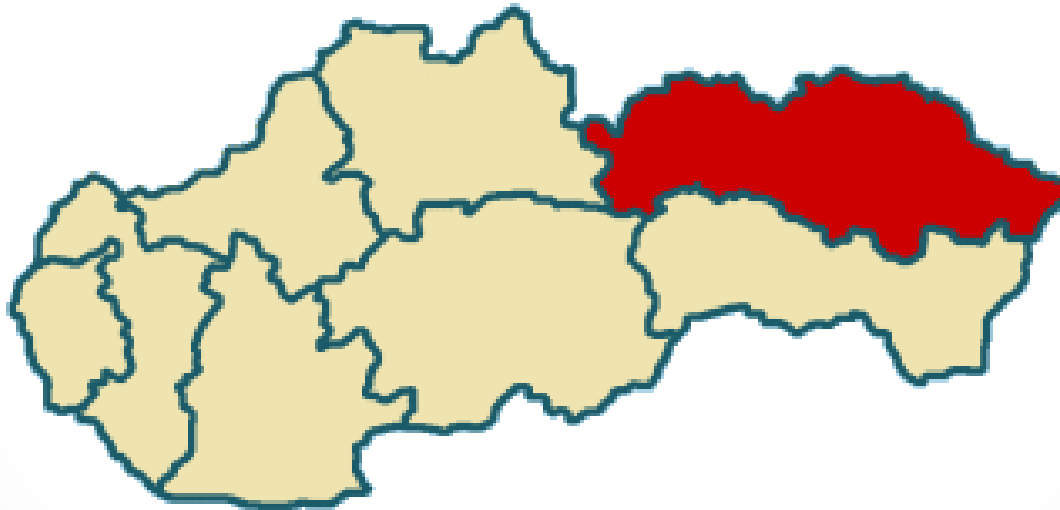


Prešov region



Patrícia Miščíková 2. C

Šk. rok: 2013/2014

Content

- Informations
- About
- Nature
- Attractions

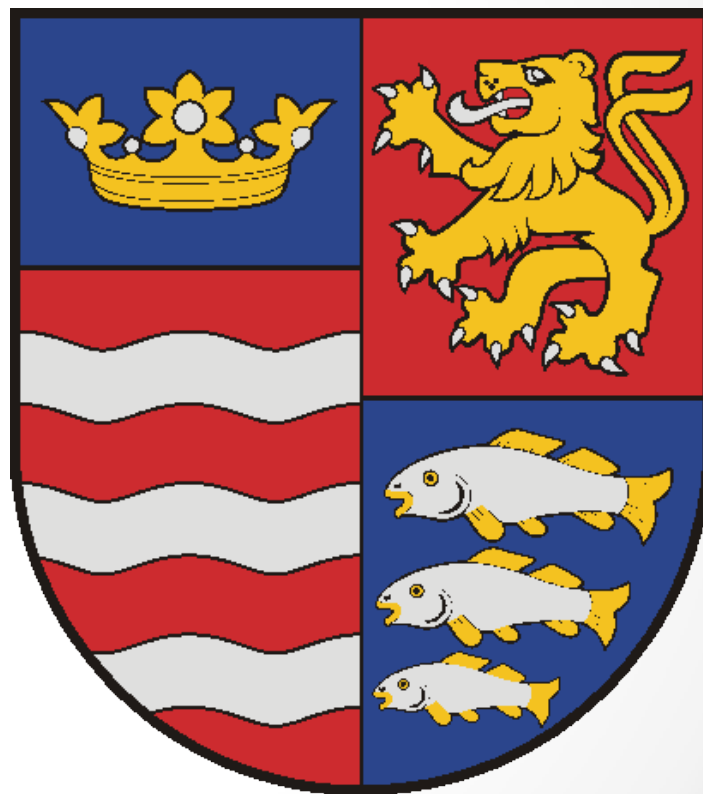
Informations

- **Area:** 8 974 km²
- **Population:** 801 939
- **Population density:** 89 inhab./km²
- **Towns:** 23
- **Districts:** 13



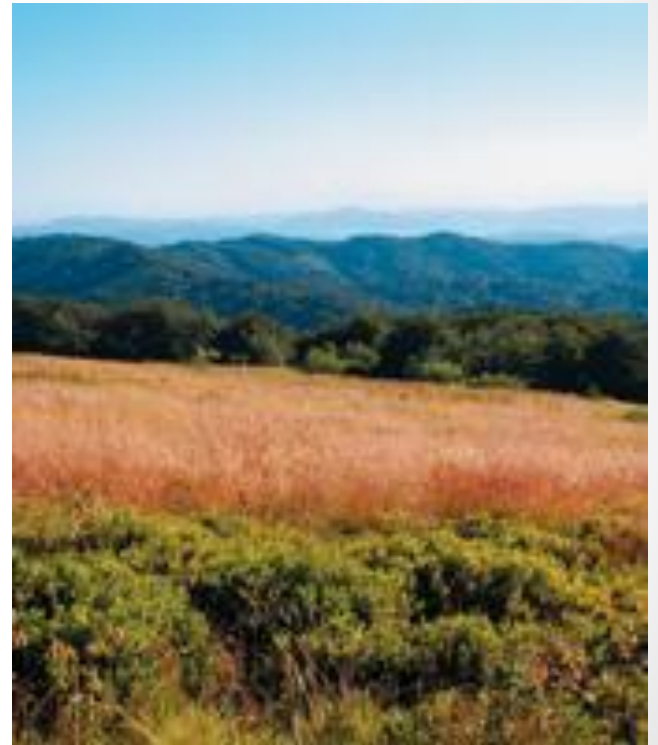
About

- the most populous region in Slovakia
- the second largest region
- the highest concentration of cultural sights
- the most unique objects listed in the UNESCO
- the best preserved nature



Nature

- the oldest national park in Slovakia (TANAP)
- Gerlach peak (2655m)
- Torysa, Topľa, Ondava, Laborec, Cirocha
- the coolest and rainiest climate in Slovakia
- the highest waterfall in Slovakia



Attractions:

- historical center of Bardejov
- St. James's Church
- wooden churches









Sources

- <http://www.po-kraj.sk/>
- <http://www.fura.sk/prekraj.html>
- <http://www.stredneskoly.sk/zoznam-skol/presovsky-kraj/>
- <http://www.krasy-slovenska.eu/articles/view/586/Doln%C3%BD%20%C5%A0ari%C5%A1%20-%20pr%C3%ADroda>
- <http://manik.sk/slovensko/den06/>
- http://www.travelguide.sk/svk/turisticke-zaujímavosti/chram-svateho-jakuba-v-levoci_358_1.html
- <http://www.chramsvjakuba.sk/>
- <http://www.visitslovakia.com/wooden-churches-of-north-eastern-slovakia/>
- <http://www.chramsvjakuba.sk/>

Thank you for your attention

